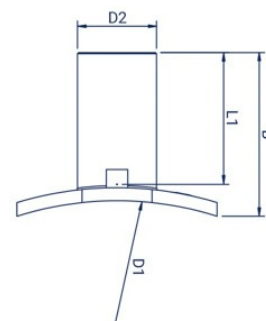
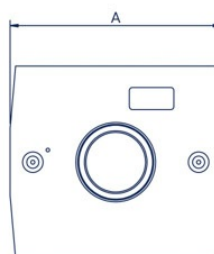
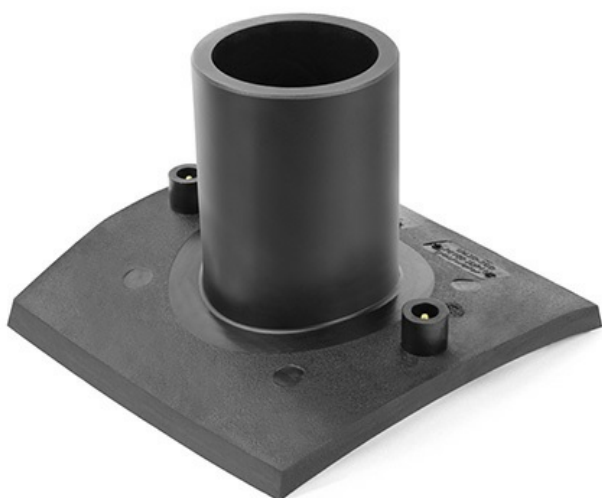




- materie primă: PE 100-RC
- domeniu de aplicare: apă și gaz
- 16 bar apă, 10 bar gaz
- MRS - 10 MPa



Cod	D1 (mm)	D2 (mm)	A (mm)	B (mm)	A se utiliza cu	L1 (mm)	Interval de sudură	Cantitate/cutie
OE355560063 11	355-560	63	210	165	FSGRIPXXX11 0	112	SDR 9-17.6	20
OE355560075 11	355-560	75	210	165	FSGRIPXXX11 0	112	SDR 9-17.6	20
OE355560090 11	355-560	90	210	165	FSGRIPXXX11 0	112	SDR 9-17.6	12
OE355560110 11	355-560	110	210	165	FSGRIPXXX11 0	112	SDR 9-17.6	16
OE630900063 11	630-900	63	209	155	FSGRIPXXX11 0	110	SDR 9-17.6	20
OE630900075 11	630-900	75	209	155	FSGRIPXXX11 0	110	-	16
OE630900090 11	630-900	90	209	155	FSGRIPXXX11 0	110	SDR 9-17.6	16
OE630900110 11	630-900	110	209	155	FSGRIPXXX11 0	110	SDR 9-17.6	16

